

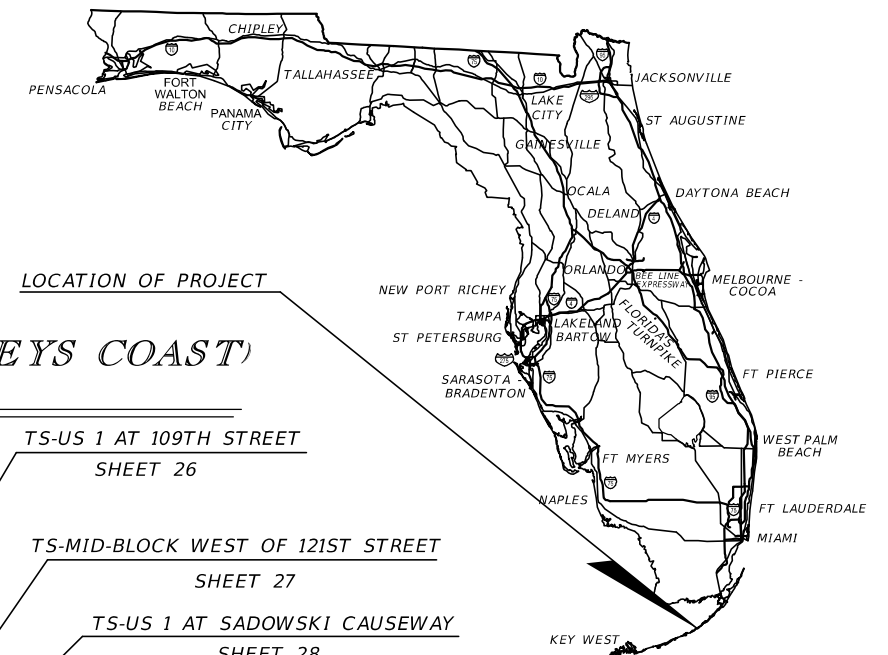
STATE OF FLORIDA
DEPARTMENT OF TRANSPORTATION

MONROE COUNTY (90060, 90050, 90040, 90030, 90020)

STATE ROAD NO. 5

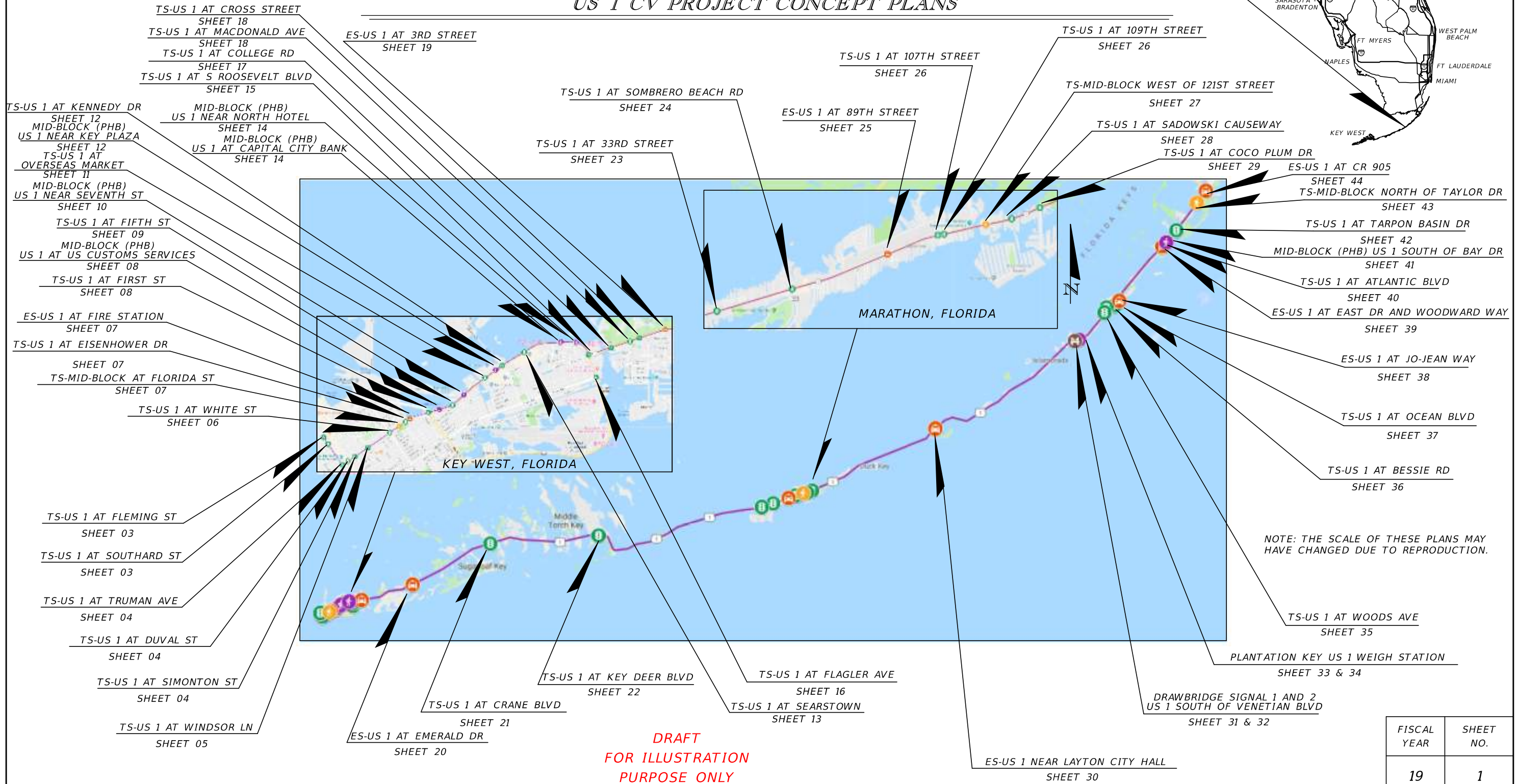
*KEYS CONNECTING OVERSEAS TO ADVANCE SAFE TRAVEL (KEYS COAST)
US 1 CV PROJECT CONCEPT PLANS*

LOCATION OF PROJECT



INDEX OF PLANS

SHEET NO.	SHEET DESCRIPTION
1	KEY SHEET
2	GENERAL NOTES
3-44	DETAIL SHEETS







**DRAFT
FOR ILLUSTRATION
PURPOSE ONLY**

FISCAL YEAR	SHEET NO.
19	1

GENERAL NOTES

1. NO GENERAL NOTES PROVIDED AT THIS TIME.

LEGEND

EXISTING	PROPOSED	
		POLE MOUNT CABINET
		GROUND MOUNT CABINET
		ROADSIDE UNIT (RSU)
		RSU COVERAGE

REVISIONS				<p style="color: red; font-weight: bold;">DRAFT FOR ILLUSTRATION PURPOSE ONLY</p>	<p style="font-weight: bold;">STATE OF FLORIDA DEPARTMENT OF TRANSPORTATION</p>			<p style="font-size: 1.2em; font-weight: bold;">GENERAL NOTES</p>	SHEET NO.
DATE	DESCRIPTION	DATE	DESCRIPTION		ROAD NO.	COUNTY	FINANCIAL PROJECT ID		2
					US 1	MONROE			



REVISIONS			
DATE	DESCRIPTION	DATE	DESCRIPTION

DRAFT
FOR ILLUSTRATION
PURPOSE ONLY

STATE OF FLORIDA DEPARTMENT OF TRANSPORTATION		
ROAD NO.	COUNTY	FINANCIAL PROJECT ID
US 1	MONROE	

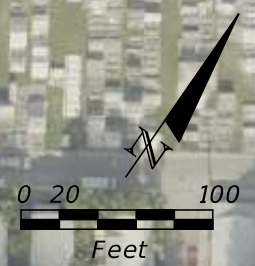
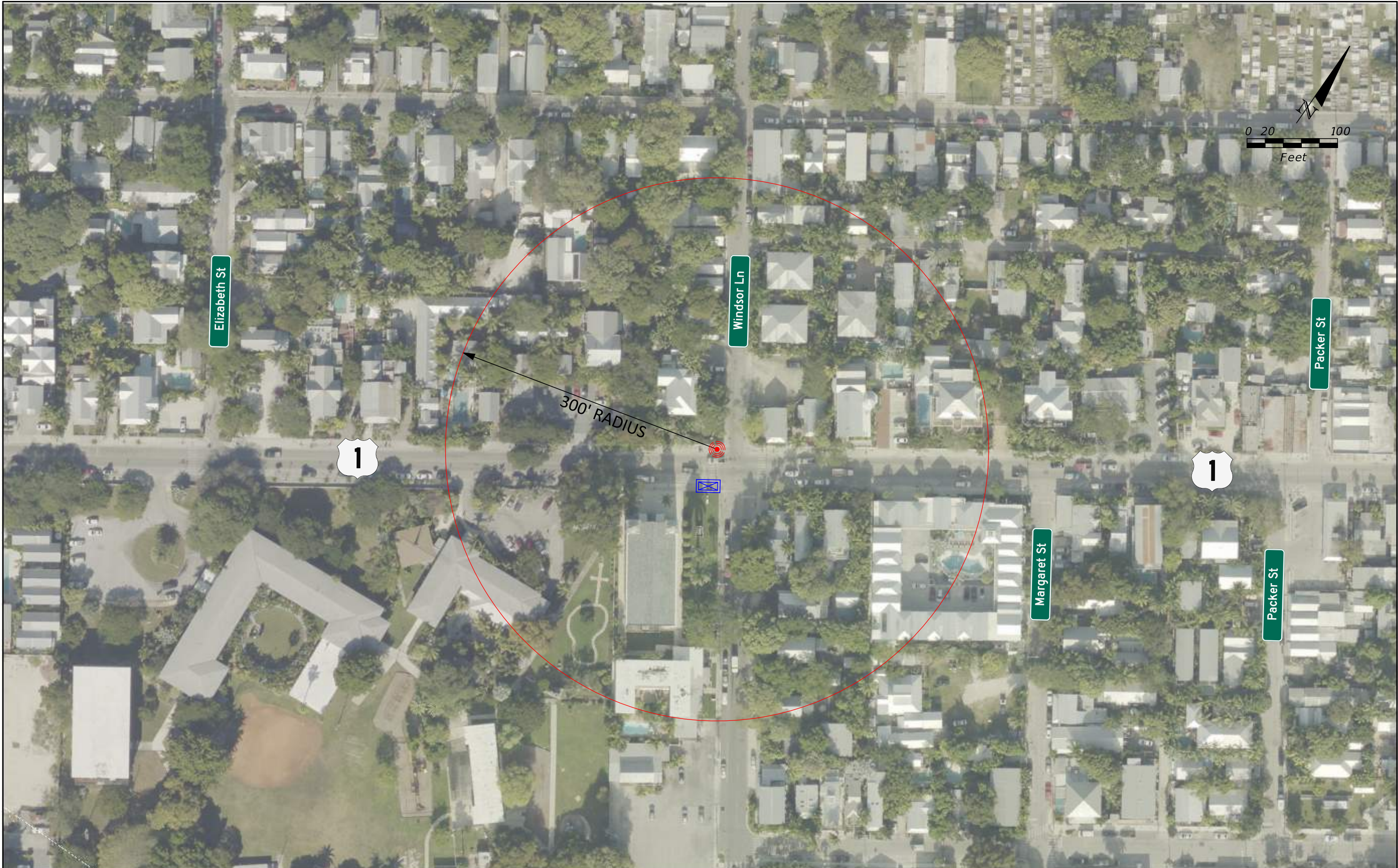
TRAFFIC SIGNAL
US 1 AT FLEMING ST
AND US 1 AT SOUTHARD ST

SHEET
NO.

03



REVISIONS				STATE OF FLORIDA DEPARTMENT OF TRANSPORTATION	TRAFFIC SIGNAL		SHEET NO.
DATE	DESCRIPTION	DATE	DESCRIPTION		ROAD NO.	COUNTY	
					US 1	MONROE	
DRAFT FOR ILLUSTRATION PURPOSE ONLY				US 1 AT TRUMAN ST AND US 1 AT DUVAL STREET AND US 1 AT SIMONTON STREET			04



DATE		DESCRIPTION		DATE		DESCRIPTION	

DRAFT
FOR ILLUSTRATION
PURPOSE ONLY

STATE OF FLORIDA
DEPARTMENT OF TRANSPORTATION

ROAD NO.	COUNTY	FINANCIAL PROJECT ID
US 1	MONROE	

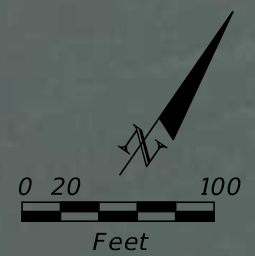
TRAFFIC SIGNAL
US 1 AT WINDSOR LANE

SHEET NO.
05

dstutts
2/25/2019
2:51:01 PM
J:\62717_D6 TSM&O\TECHPROD\01_US 1 CAV Pilot\cadd\PLANCV05.dgn



REVISIONS				DRAFT FOR ILLUSTRATION PURPOSE ONLY	STATE OF FLORIDA DEPARTMENT OF TRANSPORTATION			TRAFFIC SIGNAL US 1 AT WHITE STREET	SHEET NO.
DATE	DESCRIPTION	DATE	DESCRIPTION		ROAD NO.	COUNTY	FINANCIAL PROJECT ID		06
					US 1	MONROE			



REVISIONS				DRAFT FOR ILLUSTRATION PURPOSE ONLY	STATE OF FLORIDA DEPARTMENT OF TRANSPORTATION			TRAFFIC SIGNAL US 1 AT FLORIDA STREET AND US 1 AT EISENHOWER DR EMERGENCY SIGNAL US 1 AT FIRE STATION	SHEET NO.
DATE	DESCRIPTION	DATE	DESCRIPTION		ROAD NO.	COUNTY	FINANCIAL PROJECT ID		07
					US 1	MONROE			



MID-BLOCK PEDESTRIAN HYBRID BEACONS ARE UNDER CONSTRUCTION, PLANNED COMPLETION IN 2019. PROPOSED RSU AND CCTV AT THIS LOCATION

REVISIONS	
DATE	DESCRIPTION

**DRAFT
FOR ILLUSTRATION
PURPOSE ONLY**

STATE OF FLORIDA DEPARTMENT OF TRANSPORTATION		
ROAD NO.	COUNTY	FINANCIAL PROJECT ID
US 1	MONROE	

**TRAFFIC SIGNAL
US 1 AT FIRST STREET
AND PEDESTRIAN HYBRID BEACON
AT US CUSTOMS SERVICES**

SHEET NO.
08



REVISIONS			
DATE	DESCRIPTION	DATE	DESCRIPTION

DRAFT
FOR ILLUSTRATION
PURPOSE ONLY

STATE OF FLORIDA DEPARTMENT OF TRANSPORTATION		
ROAD NO.	COUNTY	FINANCIAL PROJECT ID
US 1	MONROE	

TRAFFIC SIGNAL
US 1 AT FIFTH STREET

SHEET
NO.

09



REVISIONS	
DATE	DESCRIPTION

DRAFT
FOR ILLUSTRATION
PURPOSE ONLY

STATE OF FLORIDA DEPARTMENT OF TRANSPORTATION		
ROAD NO.	COUNTY	FINANCIAL PROJECT ID
US 1	MONROE	

*MID-BLOCK PEDESTRIAN
HYBRID BEACON (PHB)
AT FAIRFIELD INN & SUITES*

SHEET
NO.

10



REVISIONS			
DATE	DESCRIPTION	DATE	DESCRIPTION

DRAFT
FOR ILLUSTRATION
PURPOSE ONLY

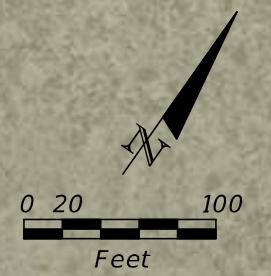
STATE OF FLORIDA DEPARTMENT OF TRANSPORTATION		
ROAD NO.	COUNTY	FINANCIAL PROJECT ID
US 1	MONROE	

TRAFFIC SIGNAL
US 1 AT OVERSEAS MARKET

SHEET
NO.

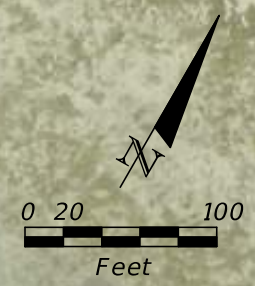
11

MID-BLOCK PEDESTRIAN HYBRID BEACONS ARE UNDER CONSTRUCTION, PLANNED COMPLETION IN 2019. PROPOSED RSU AND CCTV AT THIS LOCATION



REVISIONS				STATE OF FLORIDA DEPARTMENT OF TRANSPORTATION	TRAFFIC SIGNAL US 1 AT KENNEDY DR AND PEDESTRIAN HYBRID BEACON NEAR KEY PLAZA		SHEET NO. 12
DATE	DESCRIPTION	DATE	DESCRIPTION		ROAD NO.	COUNTY	
					US 1	MONROE	

DRAFT FOR ILLUSTRATION PURPOSE ONLY

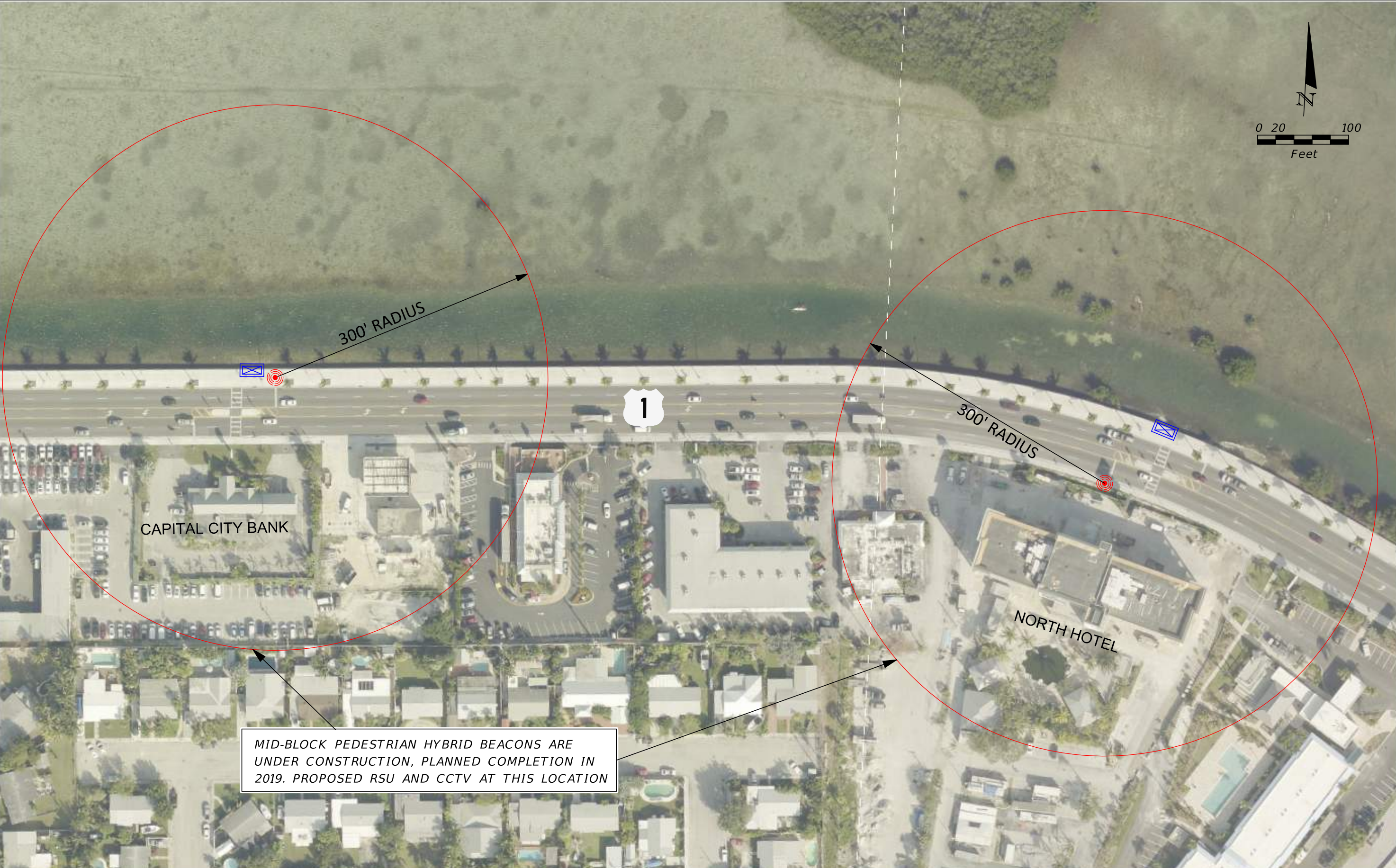
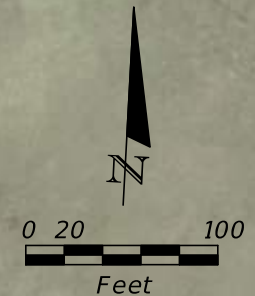


1

Searstown

Peacock St

REVISIONS		REVISIONS		DRAFT FOR ILLUSTRATION PURPOSE ONLY	STATE OF FLORIDA DEPARTMENT OF TRANSPORTATION			TRAFFIC SIGNAL US 1 AT SEARSTOWN	SHEET NO.
DATE	DESCRIPTION	DATE	DESCRIPTION		ROAD NO.	COUNTY	FINANCIAL PROJECT ID		
					US 1	MONROE			



MID-BLOCK PEDESTRIAN HYBRID BEACONS ARE UNDER CONSTRUCTION, PLANNED COMPLETION IN 2019. PROPOSED RSU AND CCTV AT THIS LOCATION

REVISIONS				DRAFT FOR ILLUSTRATION PURPOSE ONLY	STATE OF FLORIDA DEPARTMENT OF TRANSPORTATION			MID-BLOCK PEDESTRIAN HYBRID BEACON (PHB) US 1 AT CAPITAL CITY BANK AND AT NORTH HOTEL	SHEET NO.
DATE	DESCRIPTION	DATE	DESCRIPTION		ROAD NO.	COUNTY	FINANCIAL PROJECT ID		
					US 1	MONROE			14



TWO TRAFFIC CONTROLLERS AT THIS LOCATION (PRIMARY & SECONDARY)

300' RADIUS

S Roosevelt Blvd

ATA

Duck Ave

REVISIONS				DRAFT FOR ILLUSTRATION PURPOSE ONLY	STATE OF FLORIDA DEPARTMENT OF TRANSPORTATION			TRAFFIC SIGNAL US 1 AT S ROOSEVELT BLVD	SHEET NO.
DATE	DESCRIPTION	DATE	DESCRIPTION		ROAD NO.	COUNTY	FINANCIAL PROJECT ID		
					US 1	MONROE			



300' RADIUS

Eagle Ave

Flagler Ave

A1A

A1A

REVISIONS			
DATE	DESCRIPTION	DATE	DESCRIPTION

**DRAFT
FOR ILLUSTRATION
PURPOSE ONLY**

STATE OF FLORIDA DEPARTMENT OF TRANSPORTATION		
ROAD NO.	COUNTY	FINANCIAL PROJECT ID
A1A	MONROE	

**TRAFFIC SIGNAL
US 1 AT S ROOSEVELT BLVD**

SHEET
NO.
16



1

1

College Rd

300' RADIUS

0 20 100
Feet

REVISIONS				STATE OF FLORIDA DEPARTMENT OF TRANSPORTATION	TRAFFIC SIGNAL US 1 AT COLLEGE RD	SHEET NO. 17
DATE	DESCRIPTION	DATE	DESCRIPTION			

DRAFT
FOR ILLUSTRATION
PURPOSE ONLY



REVISIONS			
DATE	DESCRIPTION	DATE	DESCRIPTION

**DRAFT
FOR ILLUSTRATION
PURPOSE ONLY**

STATE OF FLORIDA DEPARTMENT OF TRANSPORTATION		
ROAD NO.	COUNTY	FINANCIAL PROJECT ID
US 1	MONROE	

**TRAFFIC SIGNAL
US 1 AT CROSS STREET
AND US 1 AT MACDONALD AVE**

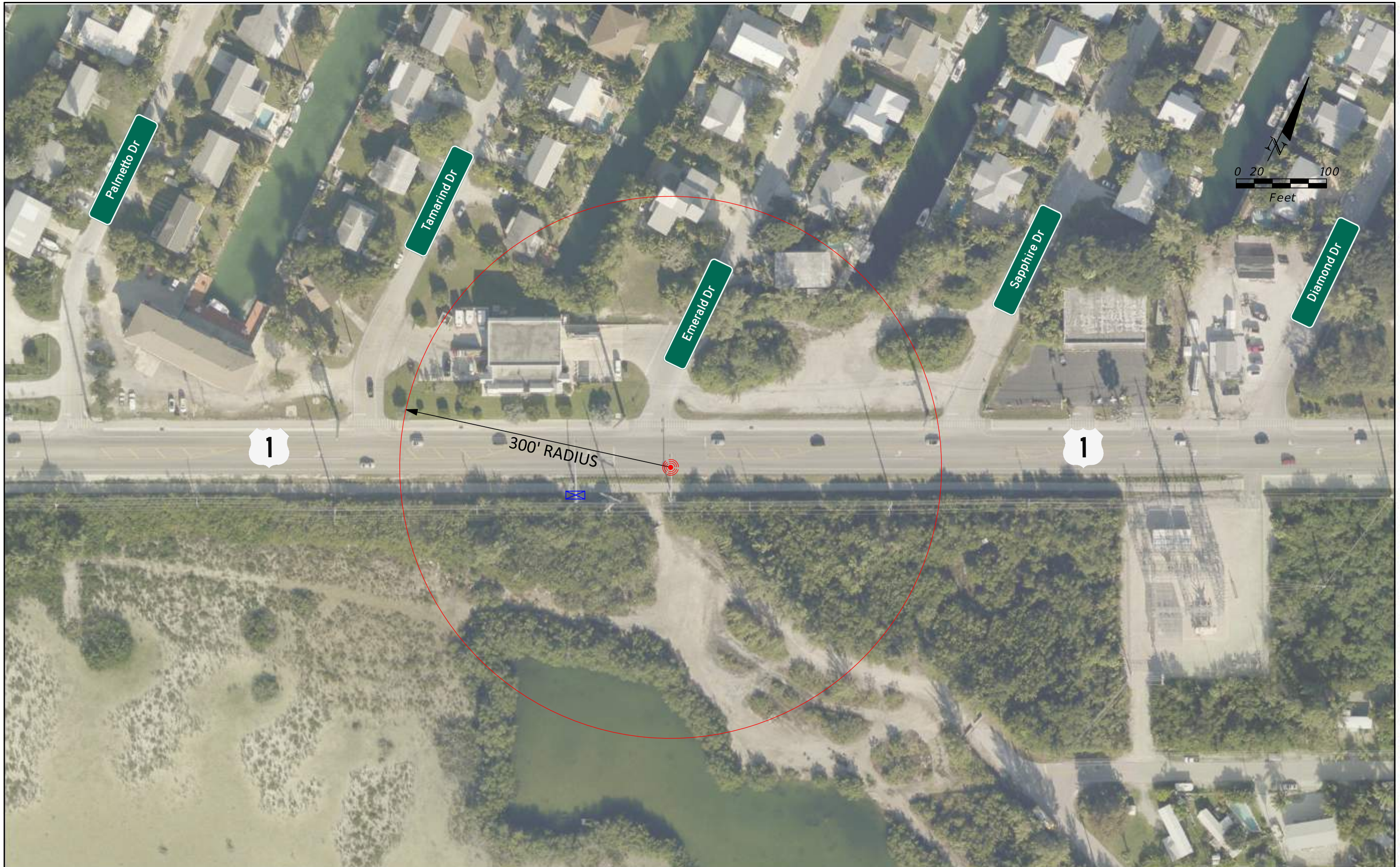
SHEET
NO.
18



NO RSU PLACED AT THIS LOCATION
(SIGNAL IN FLASHING MODE)

REVISIONS				STATE OF FLORIDA DEPARTMENT OF TRANSPORTATION	EMERGENCY SIGNAL US 1 AT 3RD STREET	SHEET NO. 19
DATE	DESCRIPTION	DATE	DESCRIPTION			

DRAFT
FOR ILLUSTRATION
PURPOSE ONLY



REVISIONS			
DATE	DESCRIPTION	DATE	DESCRIPTION

DRAFT
FOR ILLUSTRATION
PURPOSE ONLY

STATE OF FLORIDA DEPARTMENT OF TRANSPORTATION		
ROAD NO.	COUNTY	FINANCIAL PROJECT ID
US 1	MONROE	

EMERGENCY SIGNAL
US 1 AT EMERALD DR

SHEET
NO.

20



REVISIONS			
DATE	DESCRIPTION	DATE	DESCRIPTION

DRAFT
FOR ILLUSTRATION
PURPOSE ONLY

STATE OF FLORIDA DEPARTMENT OF TRANSPORTATION		
ROAD NO.	COUNTY	FINANCIAL PROJECT ID
US 1	MONROE	

TRAFFIC SIGNAL
US 1 AT CRANE BLVD

SHEET
NO.

21



REVISIONS			
DATE	DESCRIPTION	DATE	DESCRIPTION

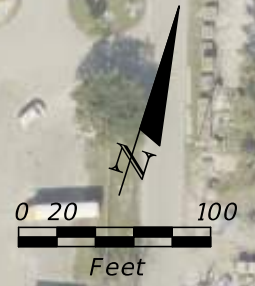
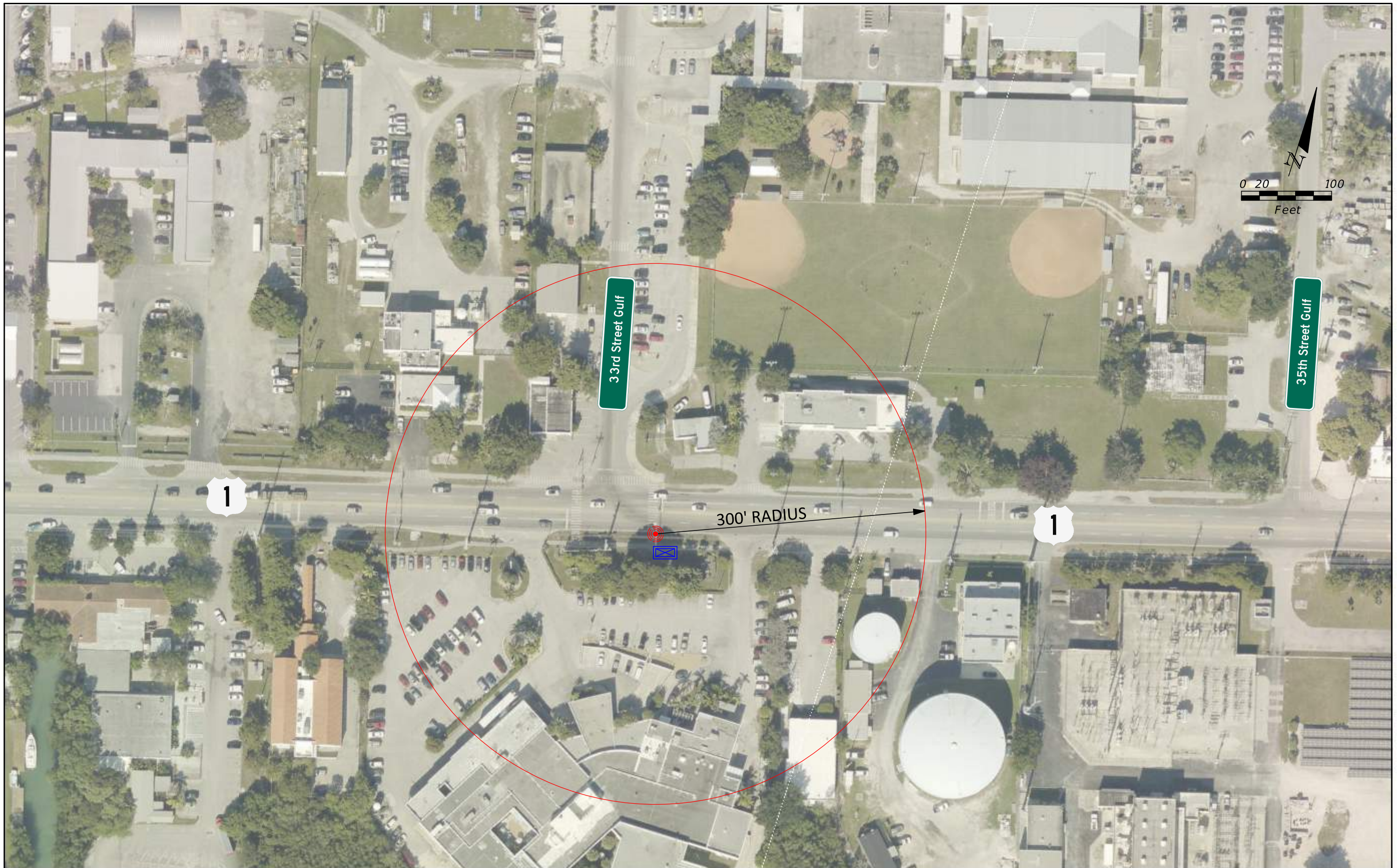
DRAFT
FOR ILLUSTRATION
PURPOSE ONLY

STATE OF FLORIDA DEPARTMENT OF TRANSPORTATION		
ROAD NO.	COUNTY	FINANCIAL PROJECT ID
US 1	MONROE	

TRAFFIC SIGNAL
US 1 AT KEY DEER BLVD

SHEET
NO.

22



33rd Street Gulf

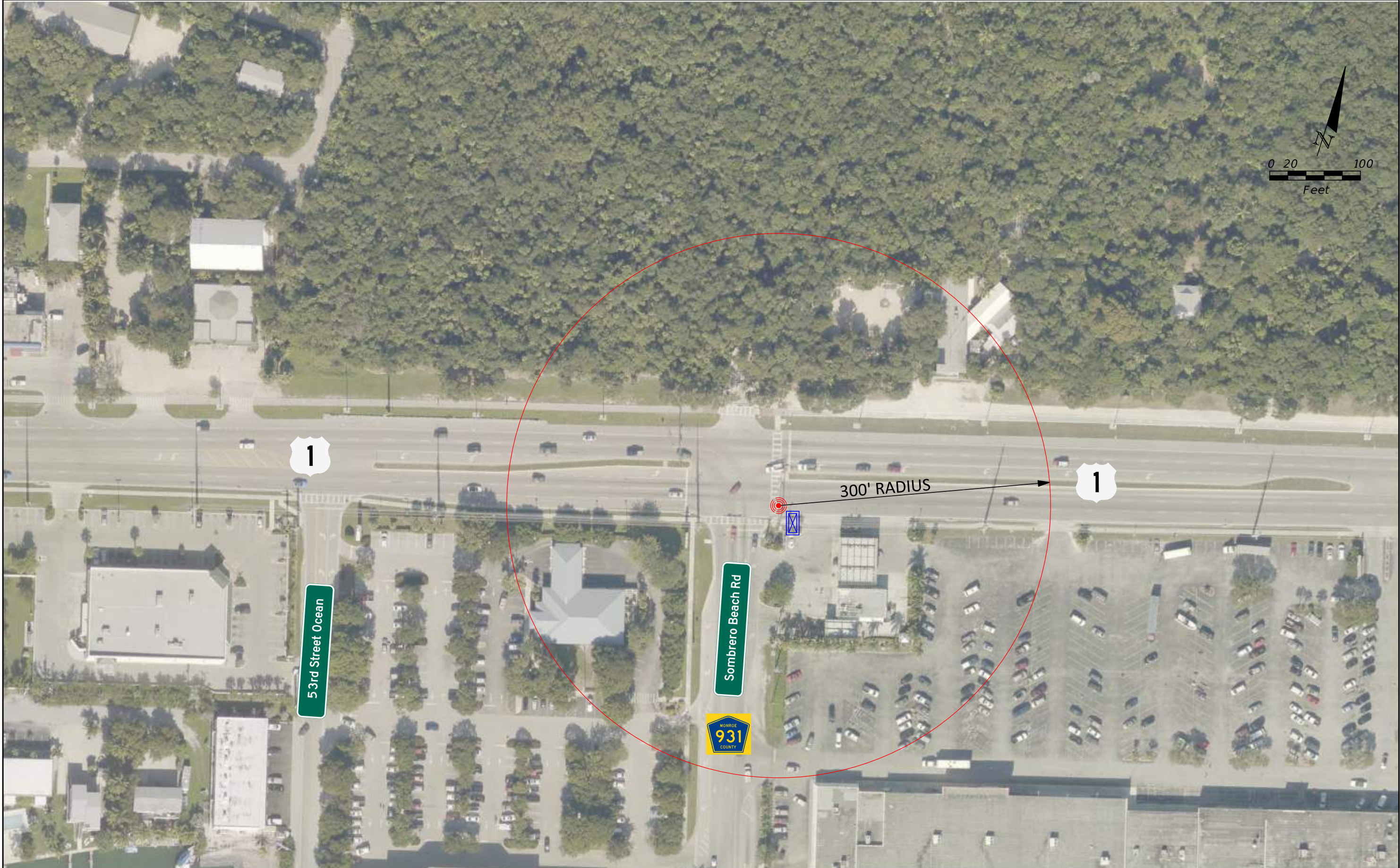
35th Street Gulf

1

1

300' RADIUS

REVISIONS				DRAFT FOR ILLUSTRATION PURPOSE ONLY	STATE OF FLORIDA DEPARTMENT OF TRANSPORTATION			TRAFFIC SIGNAL US 1 AT 33RD STREET	SHEET NO.
DATE	DESCRIPTION	DATE	DESCRIPTION		ROAD NO.	COUNTY	FINANCIAL PROJECT ID		23
					US 1	MONROE			



REVISIONS		<p style="color: red; text-align: center;">DRAFT FOR ILLUSTRATION PURPOSE ONLY</p>	STATE OF FLORIDA DEPARTMENT OF TRANSPORTATION			<p>TRAFFIC SIGNAL US 1 AT SOMBRERO BEACH</p>	SHEET NO.	
DATE	DESCRIPTION		DATE	DESCRIPTION	ROAD NO.			COUNTY
							US 1	MONROE
<p style="font-size: small; text-align: right;"> dstutts 2/25/2019 2:51:58 PM J:\62717_D6 TSM&O\TECHPROD\01_US 1 CAV Pilot\cadd\PLANCV24.dgn </p>							24	



REVISIONS			
DATE	DESCRIPTION	DATE	DESCRIPTION

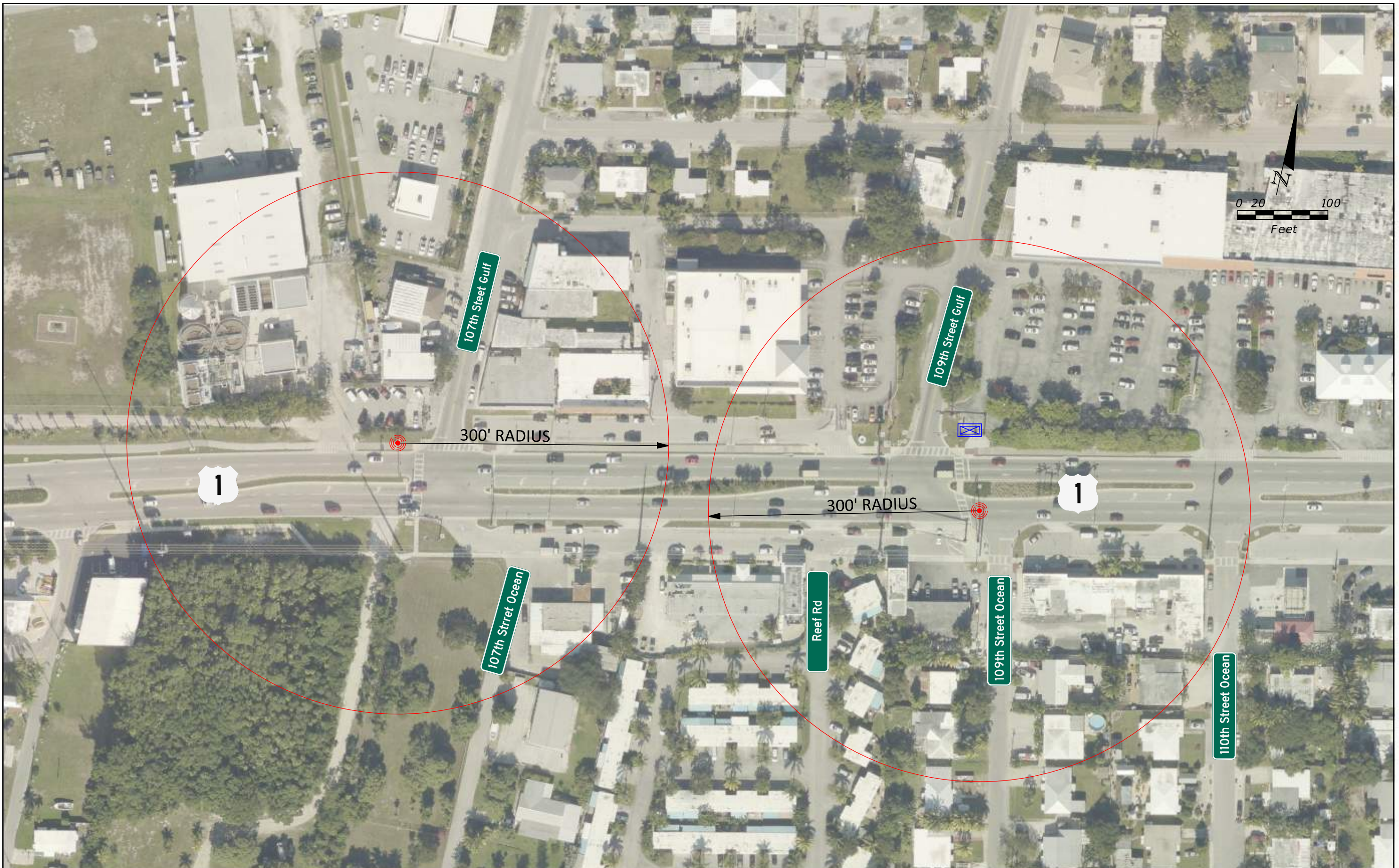
DRAFT
FOR ILLUSTRATION
PURPOSE ONLY

STATE OF FLORIDA DEPARTMENT OF TRANSPORTATION		
ROAD NO.	COUNTY	FINANCIAL PROJECT ID
US 1	MONROE	

EMERGENCY SIGNAL
US 1 AT 89TH STREET

SHEET
NO.

25



REVISIONS			
DATE	DESCRIPTION	DATE	DESCRIPTION

**DRAFT
FOR ILLUSTRATION
PURPOSE ONLY**

STATE OF FLORIDA DEPARTMENT OF TRANSPORTATION		
ROAD NO.	COUNTY	FINANCIAL PROJECT ID
US 1	MONROE	

**TRAFFIC SIGNAL
US 1 AT 107TH STREET
AND US 1 AT 109TH STREET**

SHEET
NO.
26



REVISIONS			
DATE	DESCRIPTION	DATE	DESCRIPTION

DRAFT
FOR ILLUSTRATION
PURPOSE ONLY

STATE OF FLORIDA DEPARTMENT OF TRANSPORTATION		
ROAD NO.	COUNTY	FINANCIAL PROJECT ID
US 1	MONROE	

TRAFFIC SIGNAL
MID-BLOCK WEST OF 121 ST

SHEET
NO.

27



REVISIONS			
DATE	DESCRIPTION	DATE	DESCRIPTION

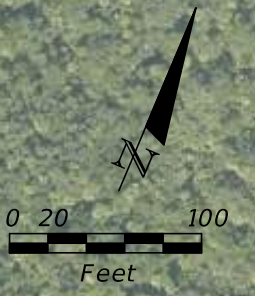
DRAFT
FOR ILLUSTRATION
PURPOSE ONLY

STATE OF FLORIDA DEPARTMENT OF TRANSPORTATION		
ROAD NO.	COUNTY	FINANCIAL PROJECT ID
US 1	MONROE	

*TRAFFIC SIGNAL US1 AT
SADOWSKI CAUSEWAY*

SHEET
NO.

28



REVISIONS				DRAFT FOR ILLUSTRATION PURPOSE ONLY	STATE OF FLORIDA DEPARTMENT OF TRANSPORTATION			TRAFFIC SIGNAL US 1 AT COCO PLUM DR	SHEET NO.
DATE	DESCRIPTION	DATE	DESCRIPTION		ROAD NO.	COUNTY	FINANCIAL PROJECT ID		29
					US 1	MONROE			



REVISIONS			
DATE	DESCRIPTION	DATE	DESCRIPTION

**DRAFT
FOR ILLUSTRATION
PURPOSE ONLY**

STATE OF FLORIDA DEPARTMENT OF TRANSPORTATION		
ROAD NO.	COUNTY	FINANCIAL PROJECT ID
US 1	MONROE	

**EMERGENCY SIGNAL
US 1 AT LAYTON CITY HALL**

SHEET
NO.
30



W3-6
36" X 36"
(PROPOSED BY OTHERS)

WHEN FLASHING
BE PREPARED TO STOP
W3-4
36" X 36"
W16-13P
24" X 18"
(PROPOSED BY OTHERS)

DRAW BRIDGE AHEAD
W3-3
36" X 36"
(PROPOSED BY OTHERS)

REVISIONS			
DATE	DESCRIPTION	DATE	DESCRIPTION

**DRAFT
FOR ILLUSTRATION
PURPOSE ONLY**

STATE OF FLORIDA DEPARTMENT OF TRANSPORTATION		
ROAD NO.	COUNTY	FINANCIAL PROJECT ID
US 1	MONROE	

**DRAWBRIDGE SIGNAL 1
US 1 NORTH OF
SNAKE CREEK MARINA**

SHEET NO.
31



W3-6
36" X 36"
(PROPOSED BY OTHERS)

W3-4
36" X 36"
W16-13P
24" X 18"
(PROPOSED BY OTHERS)

W3-3
36" X 36"
(PROPOSED BY OTHERS)

300' RADIUS

1

MM 85.114
NORTHING: -1450991.322538
EASTING: 3271019.587661

WEIGH
STATION
NEXT RIGHT
OR
CLOSED

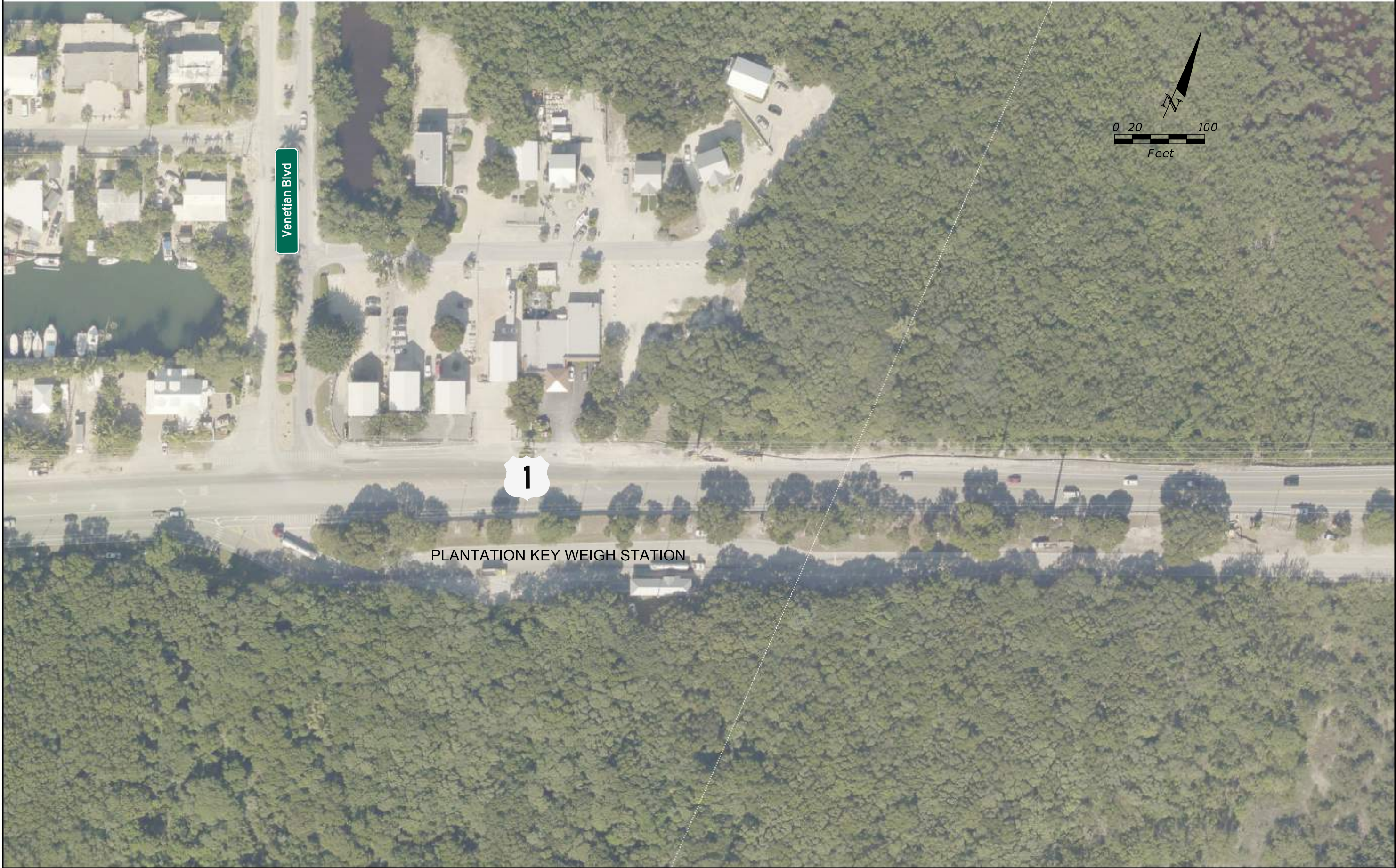
REVISIONS			
DATE	DESCRIPTION	DATE	DESCRIPTION

**DRAFT
FOR ILLUSTRATION
PURPOSE ONLY**

STATE OF FLORIDA DEPARTMENT OF TRANSPORTATION		
ROAD NO.	COUNTY	FINANCIAL PROJECT ID
US 1	MONROE	

**DRAWBRIDGE SIGNAL 2
US 1 SOUTH OF
VENETIAN BLVD**

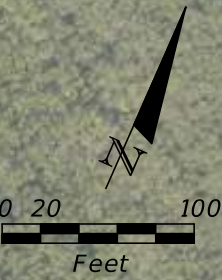
SHEET NO.
32



PLANTATION KEY WEIGH STATION



Venetian Blvd



REVISIONS				STATE OF FLORIDA DEPARTMENT OF TRANSPORTATION			PLANTATION KEY US1 STATIC WEIGH STATION	SHEET NO. 33
DATE	DESCRIPTION	DATE	DESCRIPTION	ROAD NO.	COUNTY	FINANCIAL PROJECT ID		
				US 1	MONROE			

*DRAFT
FOR ILLUSTRATION
PURPOSE ONLY*



REVISIONS			
DATE	DESCRIPTION	DATE	DESCRIPTION

DRAFT
FOR ILLUSTRATION
PURPOSE ONLY

STATE OF FLORIDA DEPARTMENT OF TRANSPORTATION		
ROAD NO.	COUNTY	FINANCIAL PROJECT ID
US 1	MONROE	

PLANTATION KEY
US1 STATIC WEIGH STATION

SHEET NO.
34



REVISIONS			
DATE	DESCRIPTION	DATE	DESCRIPTION

DRAFT
FOR ILLUSTRATION
PURPOSE ONLY

STATE OF FLORIDA DEPARTMENT OF TRANSPORTATION		
ROAD NO.	COUNTY	FINANCIAL PROJECT ID
US 1	MONROE	

TRAFFIC SIGNAL
US 1 AT WOODS AVE

SHEET
NO.

35



REVISIONS			
DATE	DESCRIPTION	DATE	DESCRIPTION

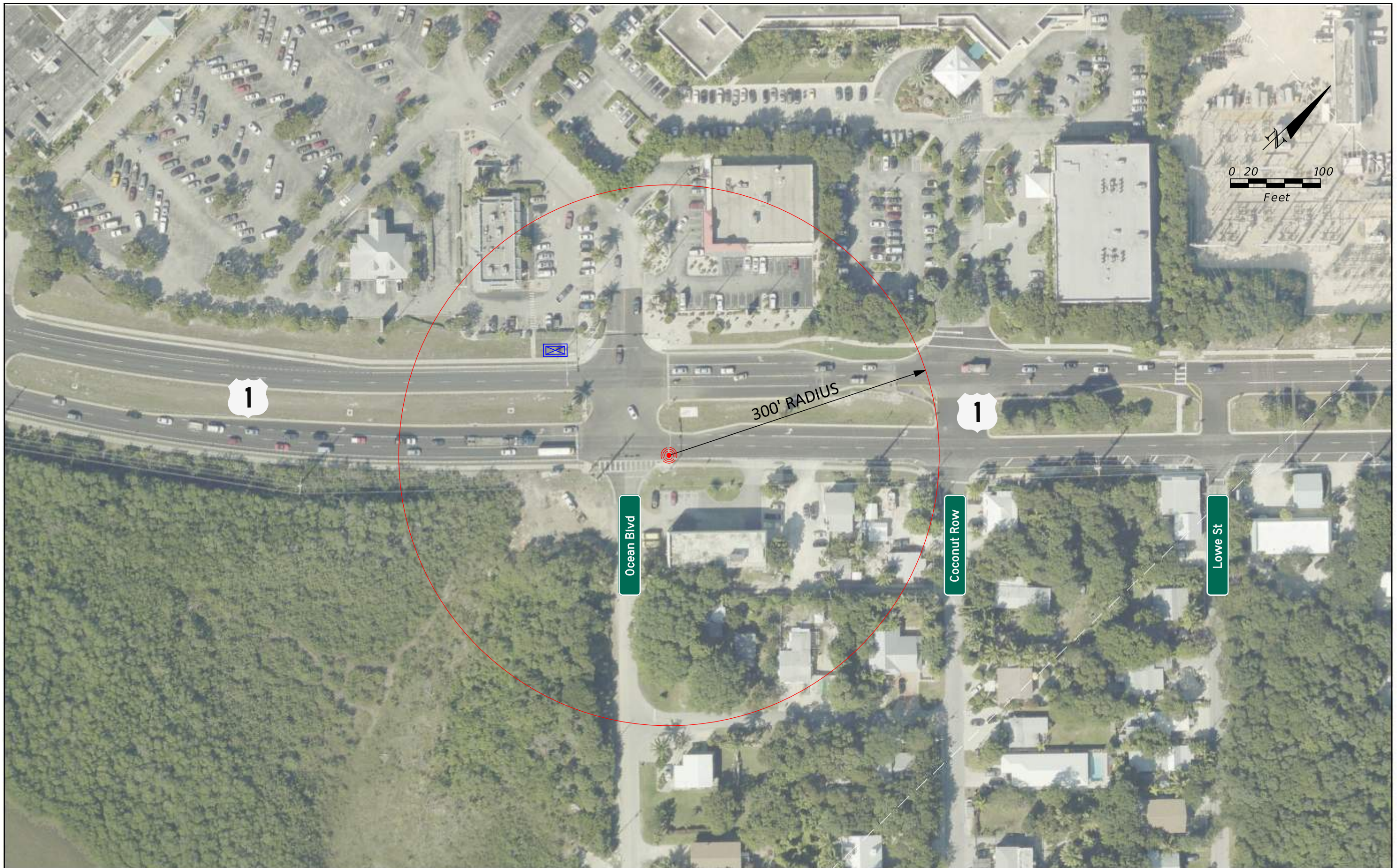
DRAFT
FOR ILLUSTRATION
PURPOSE ONLY

STATE OF FLORIDA DEPARTMENT OF TRANSPORTATION		
ROAD NO.	COUNTY	FINANCIAL PROJECT ID
US 1	MONROE	

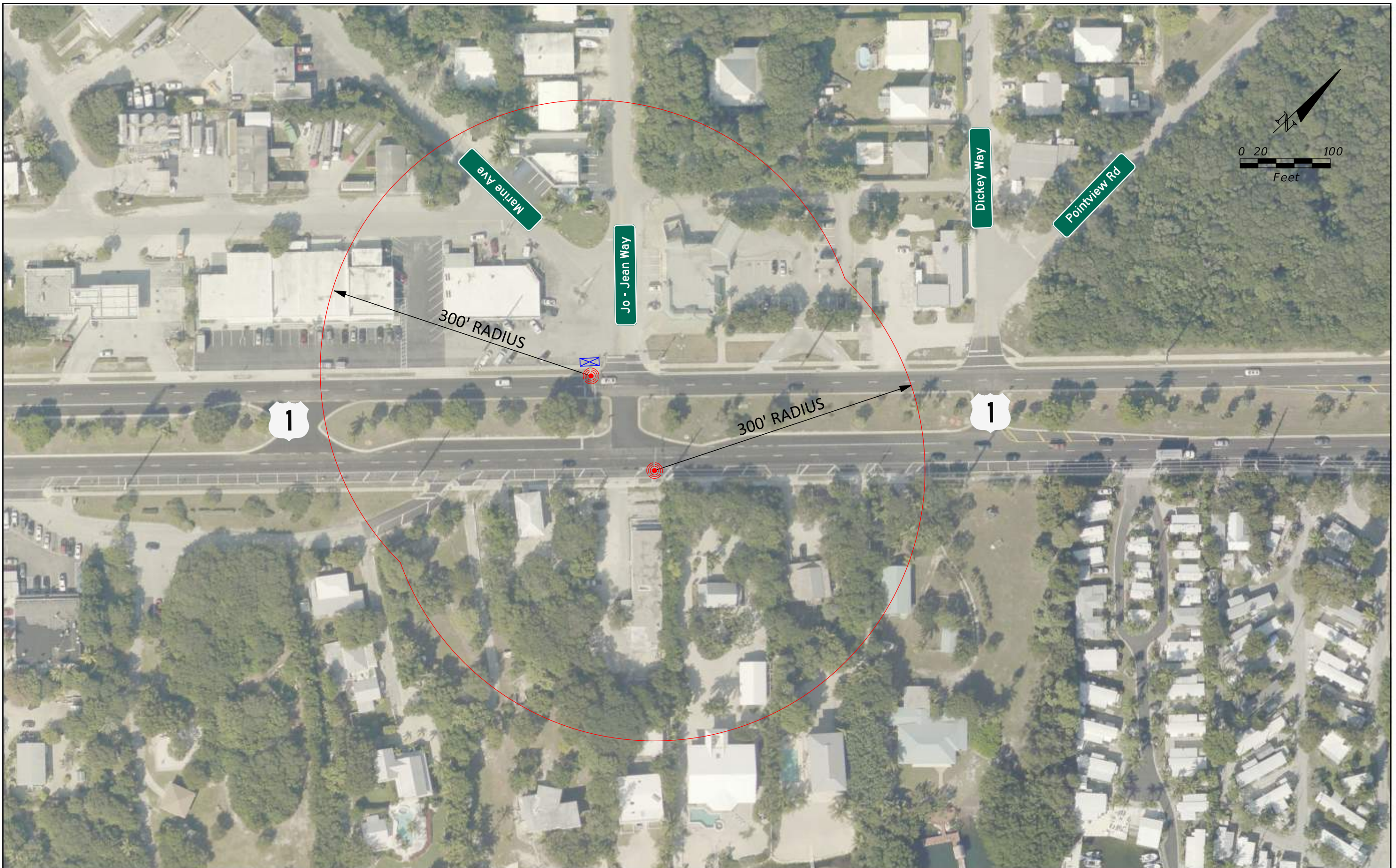
TRAFFIC SIGNAL
US 1 AT BESSIE RD

SHEET
NO.

36



REVISIONS				<p style="text-align: center; color: red;">DRAFT FOR ILLUSTRATION PURPOSE ONLY</p>	<p style="text-align: center;">STATE OF FLORIDA DEPARTMENT OF TRANSPORTATION</p>			<p style="text-align: center;">TRAFFIC SIGNAL US 1 AT OCEAN BLVD</p>	SHEET NO.
DATE	DESCRIPTION	DATE	DESCRIPTION		ROAD NO.	COUNTY	FINANCIAL PROJECT ID		37
					US 1	MONROE			



REVISIONS		REVISIONS		DRAFT FOR ILLUSTRATION PURPOSE ONLY	STATE OF FLORIDA DEPARTMENT OF TRANSPORTATION			EMERGENCY SIGNAL US 1 AT JO-JEAN WAY	SHEET NO.
DATE	DESCRIPTION	DATE	DESCRIPTION		ROAD NO.	COUNTY	FINANCIAL PROJECT ID		38
					US 1	MONROE			



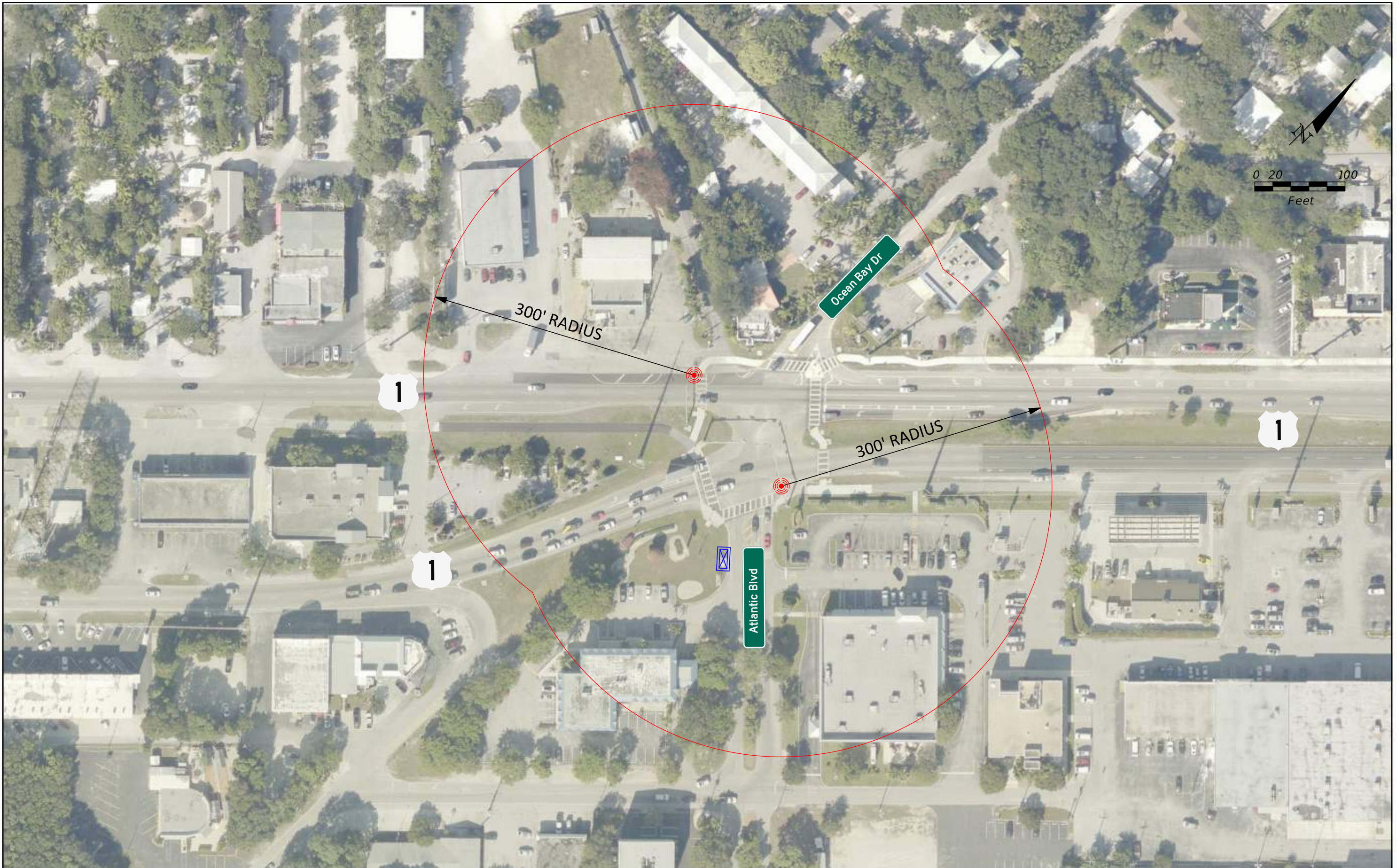
REVISIONS			
DATE	DESCRIPTION	DATE	DESCRIPTION

**DRAFT
FOR ILLUSTRATION
PURPOSE ONLY**

STATE OF FLORIDA DEPARTMENT OF TRANSPORTATION		
ROAD NO.	COUNTY	FINANCIAL PROJECT ID
US 1	MONROE	

**EMERGENCY SIGNAL
US 1 AT EAST DR
AND WOODWARD WAY**

SHEET
NO.
39



REVISIONS			
DATE	DESCRIPTION	DATE	DESCRIPTION

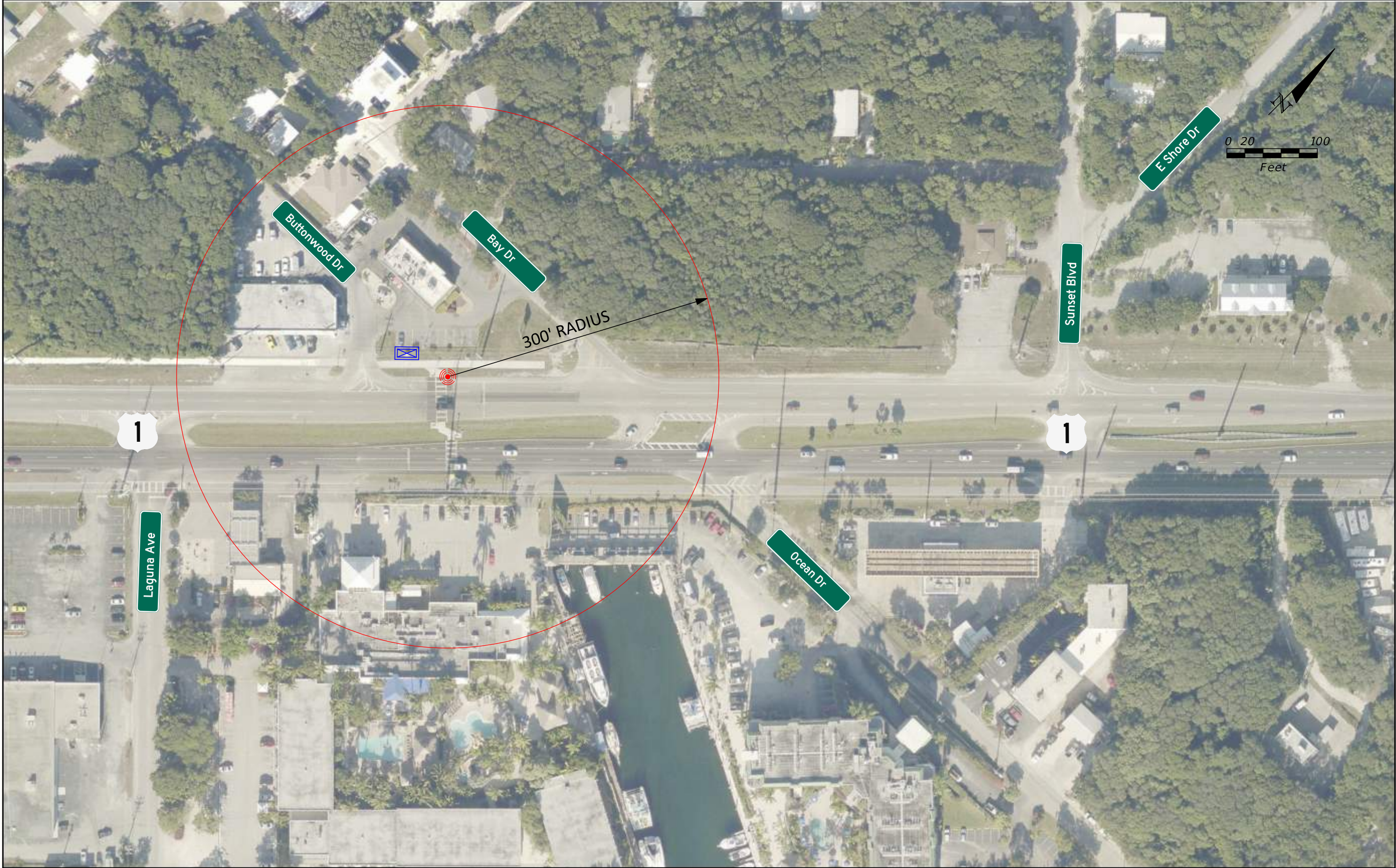
**DRAFT
FOR ILLUSTRATION
PURPOSE ONLY**

STATE OF FLORIDA DEPARTMENT OF TRANSPORTATION		
ROAD NO.	COUNTY	FINANCIAL PROJECT ID
US 1	MONROE	

**TRAFFIC SIGNAL
US 1 AT ATLANTIC BLVD**

SHEET
NO.

40



1

1

Laguna Ave

Buttonwood Dr

Bay Dr

E Shore Dr

Sunset Blvd

Ocean Dr

300' RADIUS

0 20 100
Feet

REVISIONS			
DATE	DESCRIPTION	DATE	DESCRIPTION

**DRAFT
FOR ILLUSTRATION
PURPOSE ONLY**

STATE OF FLORIDA DEPARTMENT OF TRANSPORTATION		
ROAD NO.	COUNTY	FINANCIAL PROJECT ID
US 1	MONROE	

**MID-BLOCK PEDESTRIAN
HYBRID BEACON (PHB)
US 1 SOUTH OF BAY DR**

SHEET
NO.

41



REVISIONS				<p style="text-align: center; color: red;">DRAFT FOR ILLUSTRATION PURPOSE ONLY</p>	<p style="text-align: center;">STATE OF FLORIDA DEPARTMENT OF TRANSPORTATION</p>			<p style="text-align: center;">TRAFFIC SIGNAL US 1 AT TARPON BASIN DR</p>	SHEET NO.
DATE	DESCRIPTION	DATE	DESCRIPTION		ROAD NO.	COUNTY	FINANCIAL PROJECT ID		42
						US 1	MONROE		



REVISIONS			
DATE	DESCRIPTION	DATE	DESCRIPTION

DRAFT
FOR ILLUSTRATION
PURPOSE ONLY

STATE OF FLORIDA DEPARTMENT OF TRANSPORTATION		
ROAD NO.	COUNTY	FINANCIAL PROJECT ID
US 1	MONROE	

TRAFFIC SIGNAL MID-BLOCK
US 1 NORTH OF
TAYLOR DR / BOWDEN DR

SHEET
NO.

43



REVISIONS			
DATE	DESCRIPTION	DATE	DESCRIPTION

DRAFT
FOR ILLUSTRATION
PURPOSE ONLY

STATE OF FLORIDA DEPARTMENT OF TRANSPORTATION		
ROAD NO.	COUNTY	FINANCIAL PROJECT ID
US 1	MONROE	

EMERGENCY SIGNAL
US 1 AT CR 905

SHEET
NO.
44